

Title:	How to configure ONVIF protocol	Version:	v1.2	Date:	103117
Product:	Cameras	Page:	1 of 3		
Action Required:	Information Only				

Note: ONVIF protocol is disabled by default in Firmware version 5.5.0, even the device is updated from old version which ONVIF is enabled.

Web Interface

1. Go to Camera web GUI >> Configuration >> Network >> Advanced Settings >> Integration Protocol.
2. Enable ONVIF.
3. Click “Add” button to input username and password, which Media user, operator and administrator are selectable. The maximum number of users is up to 32.

Note: The user list displays authorized users and access levels:

Media Users: have access to get the real-time streaming, get a list of device supported functions, and read configurations of device.

- configuration:
Profiles, DNS, network interfaces, endpoint reference, recordings, serial port and etc.

Operators: have access to all settings except:

- Causing changes to the system configuration, such as setting network default gateway
- Causing unrecoverable changes to the system, such as setting system factory default and upgrading system
- Reading confidential system configuration information, such as getting system log

Administrators: have unrestricted access to all settings.

Note: ONVIF user management system is independent from device management system.

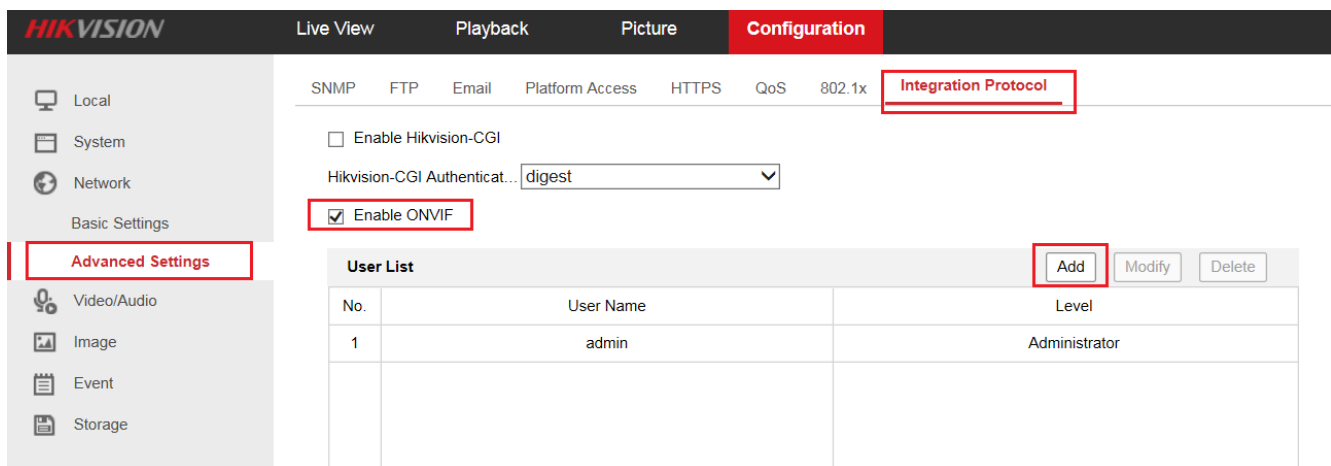


Figure 1. Integration Protocol

Title:	How to configure ONVIF protocol	Version:	v1.2	Date:	103117
Product:	Cameras	Page:	2 of 3		
Action Required:	Information Only				

Figure 2. Add User

Batch Configuration Tool Client 2.0.0.6

Note: Download “Batch Configuration Tool” from the following link:

http://www.hikvision.com/us/Tools_82.html

1. Open BatchConfigTool, and select the online devices in the LAN, and click “+ADD” button to add them to the client.

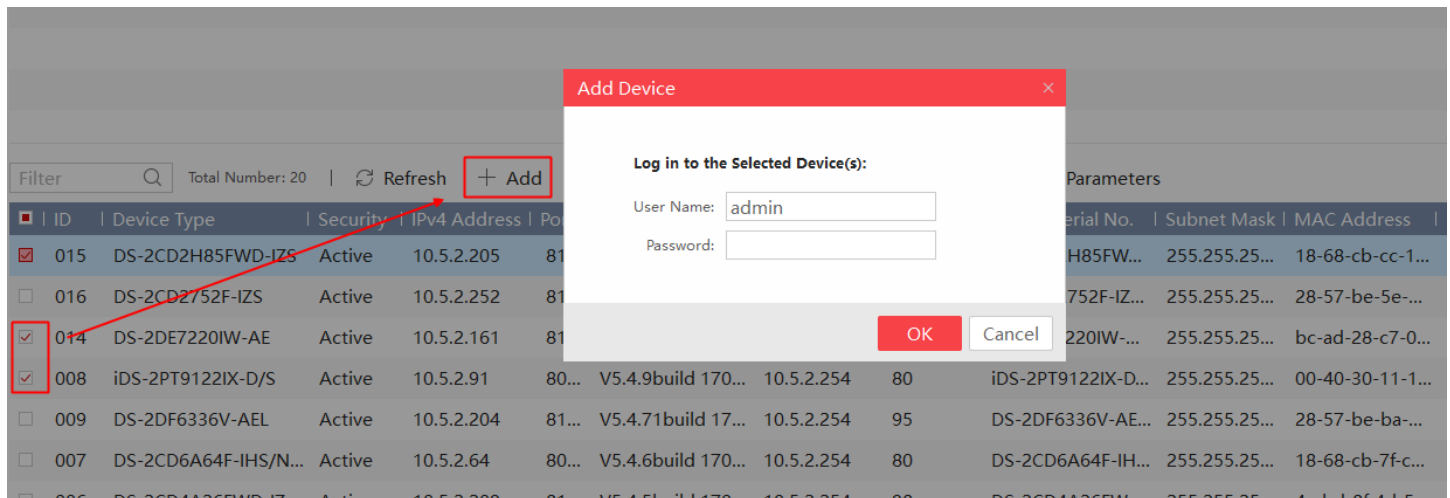


Figure 3. Add device

2. Select added devices on the client, click “More” combo Box and go into the ONVIF configuration interface.
3. On the ONVIF configuration interface, you can enable ONVIF and add ONVIF user account.

Title:	How to configure ONVIF protocol	Version:	v1.2	Date:	103117
Product:	Cameras	Page:	3 of 3		
Action Required:	Information Only				

Note: BatchConfigTool supports batch ONVIF protocol setting.

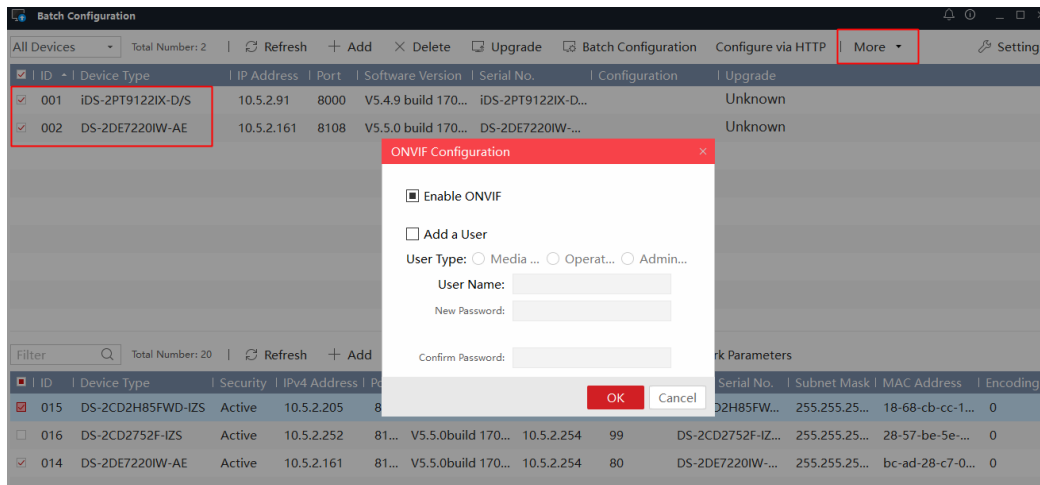


Figure 4. ONVIF Configuration