

<b>Title:</b>	How to configure CGI protocol & HTTP URL w/ FW 5.5.0	<b>Version:</b>	v1.0	<b>Date:</b>	02212018
<b>Product:</b>	Cameras w/ FW 5.5.0	<b>Page:</b>	1 of 2		
<b>Action Required:</b>	Information Only				

**Note: CGI protocol / HTTP URL are disabled by default in Firmware version 5.5.0, even the device is updated from old version which ONVIF is enabled.**

## Web Interface

1. Go to Camera web GUI >> Configuration >> Network >> Advanced Settings >> Integration Protocol.
2. Enable CGI.
3. Choose Hikvision-CGI Authentication. The default setting is "Digest".

**Note:** HTTP URL "http://<username>:<password>@<IP address of IPC>:<HTTP port>/Streaming/channels/102/httpPreview" also needs to enable CGI protocol.

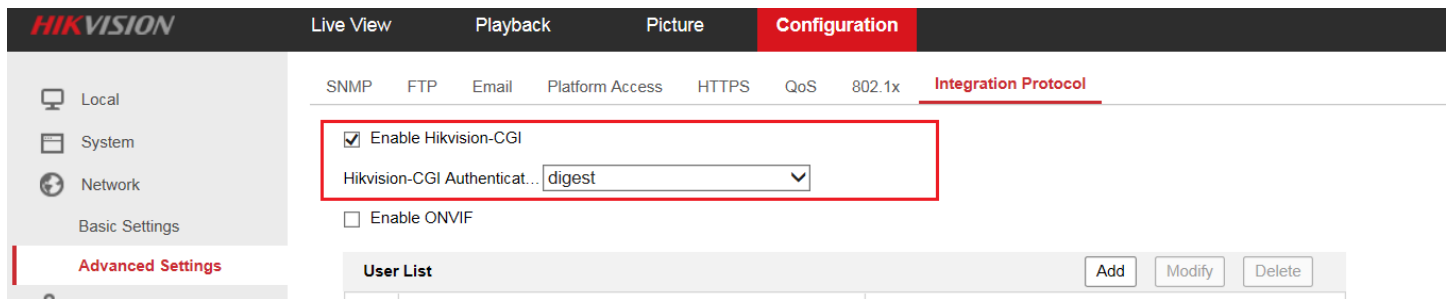


Figure 1. Enable CGI protocol

## Batch Configuration Tool Client 2.0.0.6

**Note:** Download "Batch Configuration Tool" from the following link:

[http://www.hikvision.com/us/Tools\\_82.html](http://www.hikvision.com/us/Tools_82.html)

1. Open BatchConfigTool, and select the online devices in the LAN, and click "+ADD" button to add them to the client.
2. Type user name and password, then click "OK" button.
3. Select added devices on the client, click "More" combo Box and go into the "CGI configuration" interface.
4. Enable CGI. And choose Hikvision-CGI Authentication. Then click "OK" button.

**Note:** BatchConfigTool supports batch CGI protocol setting.

<b>Title:</b>	How to configure CGI protocol & HTTP URL w/ FW 5.5.0	<b>Version:</b>	v1.0	<b>Date:</b>	02212018
<b>Product:</b>	Cameras w/ FW 5.5.0	<b>Page:</b>	2 of 2		
<b>Action Required:</b>	Information Only				

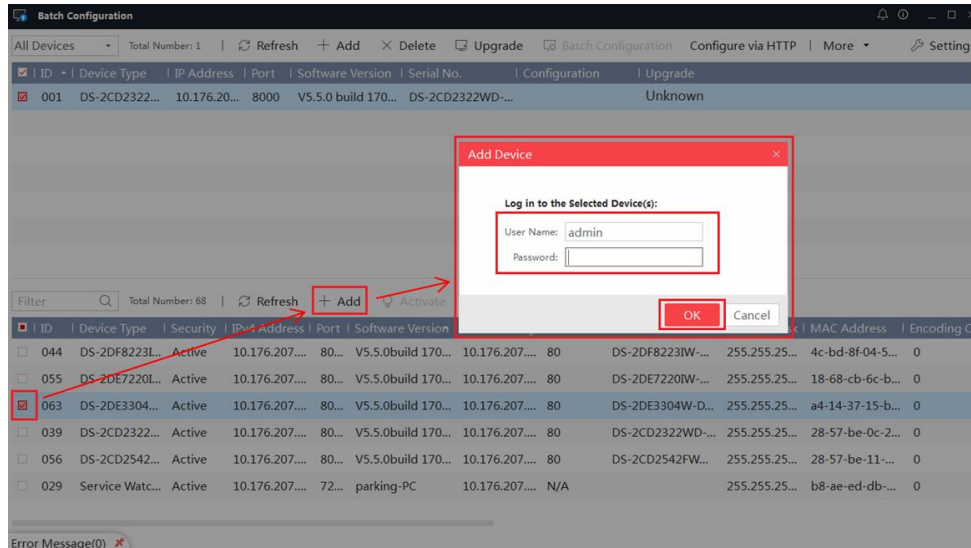


Figure 2. Add Device

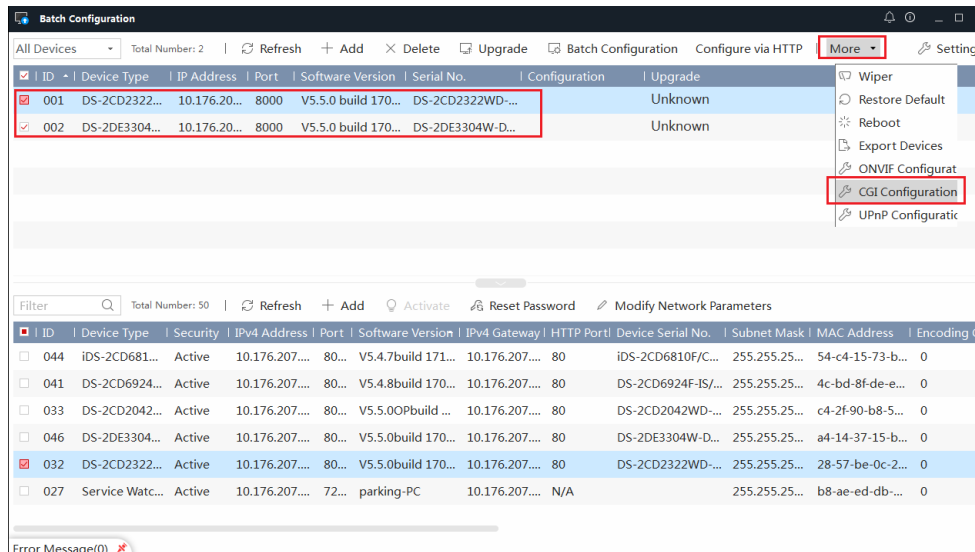


Figure 3. Choose CGI Configuration

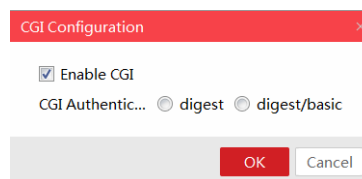


Figure 4. CGI Configuration Integration