

Title:	RN TurboHD DVR Firmware Release Notes	Version:	v3.1.17	Date:	063017
Product:	DS-xxxxHGHI-SH and DS-xxxx-HQHI-SH Series TurboHD DVRs	Build:	170615	Page:	1 of 2
Action Required:	None, Information Only				

■ Summary

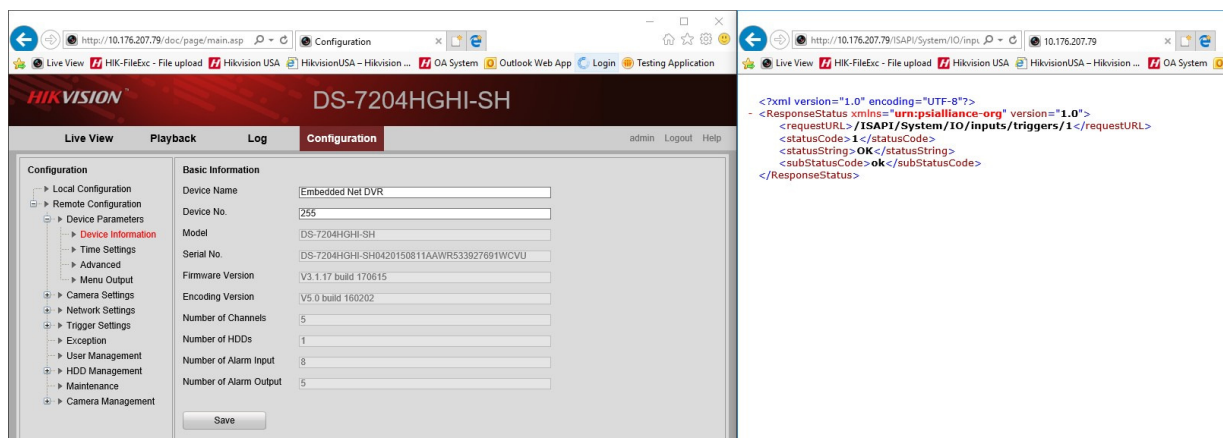
Release notes for Hikvision SH Series TurboHD DVRs.

■ Models

Device Type	Model	Software Version
DVR	DS-7200HGHI-SH Series	v3.1.17_170615
DVR	DS-7300HQHI-SH Series	v3.1.17_170615
DVR	DS-9000HQHI-SH Series	v3.1.17_170615
DVR	DS-7332HGHI-SH Series	v3.1.17_170615

■ Fixes

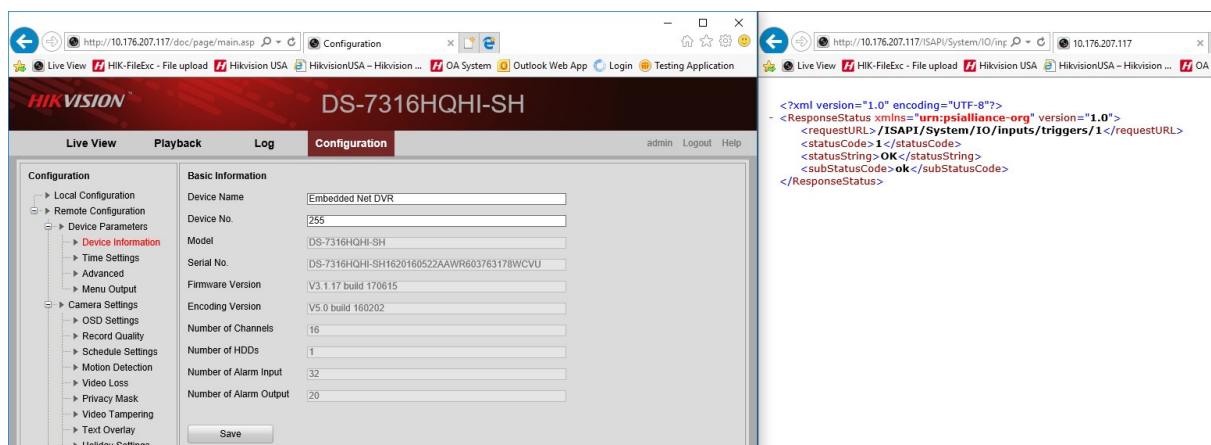
- Fixed Hik-Central reboot bug (bug refers to DVR rebooting when added to Hik-Central).
- Fixed I-View Now return value bug.
- Fixed 9016HQHI-SH reboot under specific situation bug (bug refers to DVR rebooting under high load).
- **DS-7204HGHI-SH**
 - Fixed Hik-Central reboot bug. [Verified] When DS-7204HGHI-SH is added to Hik-Central, no reboot occurs and DVR remains online. Logs do not report any abnormal shutdowns or reboots.
 - Fixed I-View Now return value bug. [Verified] DS-7204HGHI-SH returns correct return value in FW 3.1.17.



Title:	RN TurboHD DVR Firmware Release Notes	Version:	v3.5.11	Date:	031417
Product:	DS-72xxHUI-Kx and DS-72xxHQI-Kx Series TurboHD DVRs	Build:		Page:	2 of
Action Required:	None, Information Only				

- **DS-7316HQHI-SH**

- Fixed Hik-Central reboot bug. [Verified] DS-7316HQHI-SH does not reboot or abnormally shut down when added to Hik-Central. Logs from DVR do not report reboots/shutdown at the time of testing.
- Fixed I-View Now return value bug. [Verified] DS-7316HQHI-SH returns correct return value in FW 3.1.17.



- **DS-7332HGHI-SH**

- Fixed Hik-Central reboot bug. [Verified] DVR does not reboot when added to Hik-Central. Logs do not report any abnormal shutdowns or reboots.
- Fixed I-View Now return value bug. [Verified] DS-7332HGHI-SH returns correct value in FW 3.1.17.

- **DS-9016HQHI-SH**

- Fixed Hik-Central reboot bug. [Verified] No reported reboots/shutdowns/abnormal shutdowns on log of DS-9016HQHI-SH when added to Hik-Central.
- Fixed I-View Now return value bug. [Verified] DS-9016HQHI-SH returns correct value in FW 3.1.17.
- Fixed DS-9016HQHI-SH reboot under specific situation bug. [Verified: DVR does not reboot, see description for other issue] 16 TurboHD cameras (max analog channels allowed) and 18 IP cameras (max IP channels allowed) have been added to DS-9016HQHI-SH in continuous recording for load testing. DVR has been running under these conditions for 24 hours, no reboots or shutdowns have occurred. Playback on cameras are continuous without disconnections/gaps.